

SILVERENE



W e l c o m e

Welcome to Silverene.

Rise above it all. Look down on a stunning, panoramic view of the Marina from two spectacular residential towers. Connecting these unique structures is an elevated podium graced with a sun deck and pool.

On the first level, residents are pampered with their very own boulevard complete with coffee shops and retail outlets.

This marvel of architecture offers 35 floors in Tower A and 26 floors in Tower B. It encompasses all the benefits of waterfront living, topped by a unique interior treatment. A captivating glass and mirror effect reflects the blue waters and maximizes the breathtaking view on each floor. This will be another signature project from Cayan.

Welcome to the heart of the marina.

Excellence

Built on Excellence

When creating a masterpiece, it is paramount that only the finest talent is employed. Cayan is one of the leading real estate developers in the region; and has an impressive record of developing award winning projects, so it was but natural that they would invite global giants RMJM to design Silverene. RMJM is one of the world's largest architectural practices, employing over 600 people in 10 international offices: Bangkok, Beijing, Cambridge, Dubai, Edinburgh, Glasgow, Hong Kong, London, Shanghai and Singapore.

Leading the team is Hazel Wong, Regional Director Middle East of RMJM and one of the world's top architects. She is the inspiration behind Emirates Towers on Sheikh Zayed Road, Dubai and is also responsible for The Jewels on Dubai Marina and Lamar in Jeddah - Cayan's prestigious projects.

Examples of Cayan projects designed by Hazel Wong (RMJM):



CAYAN - LAMAR



CAYAN - JEWELS



CAYAN - SILVERENE

Examples of other Hazel Wong projects:



EMIRATES TOWERS



NATIONAL BANK OF DUBAI

SILVERENE

THE

ART



- Adjacent to Marina Mall
- Next to Al Majara Community
- Overlooking boat harbours
- Minutes from one of the largest boat harbours in the region
- Close to the Sea
- Quick access to Sheikh Zayed Rd



Luxury



Live life Silverene Class

Come home to the epitome of good taste and luxurious living. Floor to ceiling windows that give you a panoramic visual treat. Exclusive marble and porcelain flooring, laid out to perfection. A fully equipped kitchen for your dining pleasure. High-end finishes and fittings to enhance the cutting-edge design. And that's only on the inside!

Close-by, within the towers itself, you have a large swimming pool, a kids pool and sun deck to keep you fresh and relaxed. A state-of-the-art gymnasium in each tower will keep you fit and healthy. 24 hour building security will ensure your loved ones stay safe and sound. Finally, just when you thought it couldn't get better, a stylish reception lobby welcomes you home.



SILVERENE

L i f e



Life at the Marina

Marina living has become one of the most desirable and sought-after lifestyles in the world. The exclusivity, the status and the rewards of waterfront living are virtually boundless.

Indulge in the numerous waterfront cafes, shopping arcades, parks and public places. Challenge your adventurous spirit at the yacht club nearby. You are just 20 minutes away from downtown Dubai, with the business hubs of Media City and Internet City a stone's throw away.

All the big, prestigious hotels are nearby, Le Meridien Mina Siyahi, The One & Only - Royal Mirage, Madinat Jumeirah, The Grosvenor Hotel West Marina Beach, and the Ritz Carlton Hotel. The Dubai International Airport is a mere 15 minutes away.

Come, experience urban chic like never before. New vistas of the sparkling waterway, new activities and events, a new feeling of wide-open living space.

It's all yours. The ultimate waterfront living.



N e i g h b o

u r h o o d



Neighbourhood Delights

What's life without good neighbors! Silverene is just a short distance away from the magnificent Marina Mall, approximately 825,000 square feet of shopping splendour. The mall's extravagant boutiques and showrooms fulfill your desire for the best in the retail world. Exclusive restaurants and the essential food court take care of your every dining whim, while a state-of-the-art entertainment centre makes it the perfect day out for the whole family.

For those who prefer not to step out, Silverene presents a bouquet of facilities, including the best of retail stores, coffee shops, restaurants and essential services.

Your home will be surrounded by acres and acres of pure delight. Beautiful landscaped areas, the famous Marina Walk, gardens and play areas for the children.



SILVERENE

L e i s u r e



Cruise through life

For those who prize leisure, there are a wealth of activities to get involved in. One of the largest Boat Clubs in the region is just minutes away. It has the capacity to house approximately 220 boats and will have the ambience that befits a classic boat owner's club. The Boat Club boasts a chart room/library, pool table and cigar room, a restaurant serving seafood and a French Riviera-style coffeehouse and patisserie. The club complex will also house several retail shops for fishing and boating accessories.

Can't wait to drop anchor?



SILVERENE

Inspired by Life

In order to achieve excellence, one must be willing to challenge the norms. Cayan's mission to challenge the world of architecture, luxury and exclusivity is a living reality. Fresh from an award winning spree at the 2006 international property awards, the company is hailed as one of the leaders in real estate development.

Cayan's projects cover the entire spectrum, from exclusive residential property to commercial projects. In the past four years the company has developed 4 exclusive waterfront towers on the Dubai Marina, as well as its own freehold commercial tower, Cayan Business Center. Cayan also has a number of projects on the anvil in the Gulf region. Early this year, Cayan launched Lamar, the stunning V-shaped twin towers on the shores of the Red Sea in Jeddah.

Cayan repeats the winning performance with yet another luxurious property in a prime location - Silverene at the Dubai Marina. The legend goes on...



LAMAR - JEDDAH



INFINITY - DUBAI MARINA



DORRABAY - DUBAI MARINA



THE JEWELS - DUBAI MARINA



LA RESIDENCIA DEL MAR
DUBAI MARINA



CAYAN BUSINESS CENTRE
DUBAI TECOM



Always committed to excellence, Cayan works with only the world's best. In keeping with this philosophy, Cayan has partnered with the renowned Dorra Group and Al Gihaz for investment in the Silverene project.

The Dorra Group is a prestigious multinational organization that has over 5 decades of experience, including real estate investment. Its achievements include path breaking projects in the contracting, industrial, real estate & housing development, tourism and services sectors. The landmark Dorrabay project, being built in partnership with Cayan, is another feather in its cap.

Al Gihaz has been a leader in providing structural, commercial, industrial and technical services for the past 25 years. Strategically located in Riyadh, the company is renowned for its expertise in electrical, electromechanical and structural works.

Cayan looks forward to becoming a unique brand entity by delivering unique homes and creating outstanding landmarks.

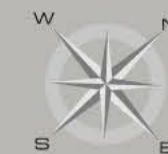


Investment partners for Silverene

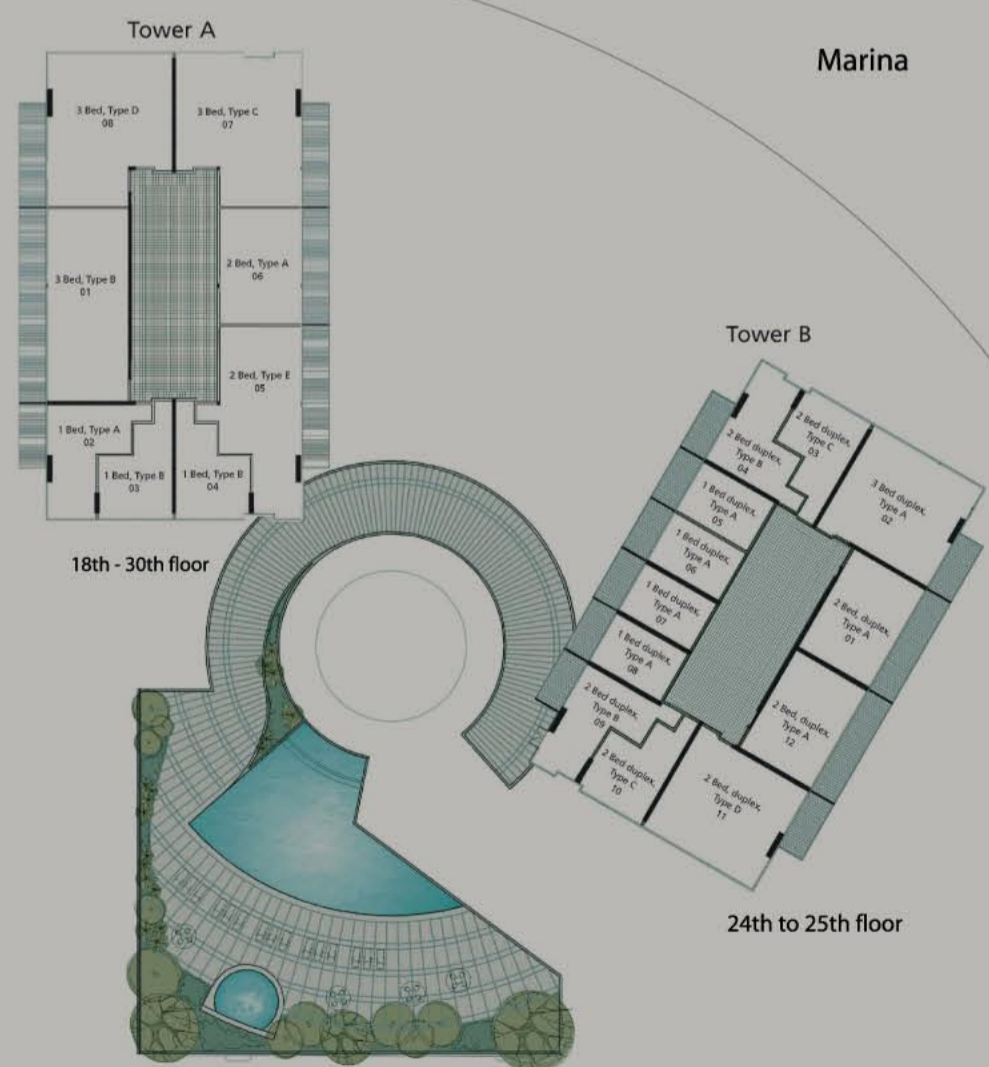
For more information, do visit us on:
Cayan: www.cayan.net

SILVERENE

SILVERENE



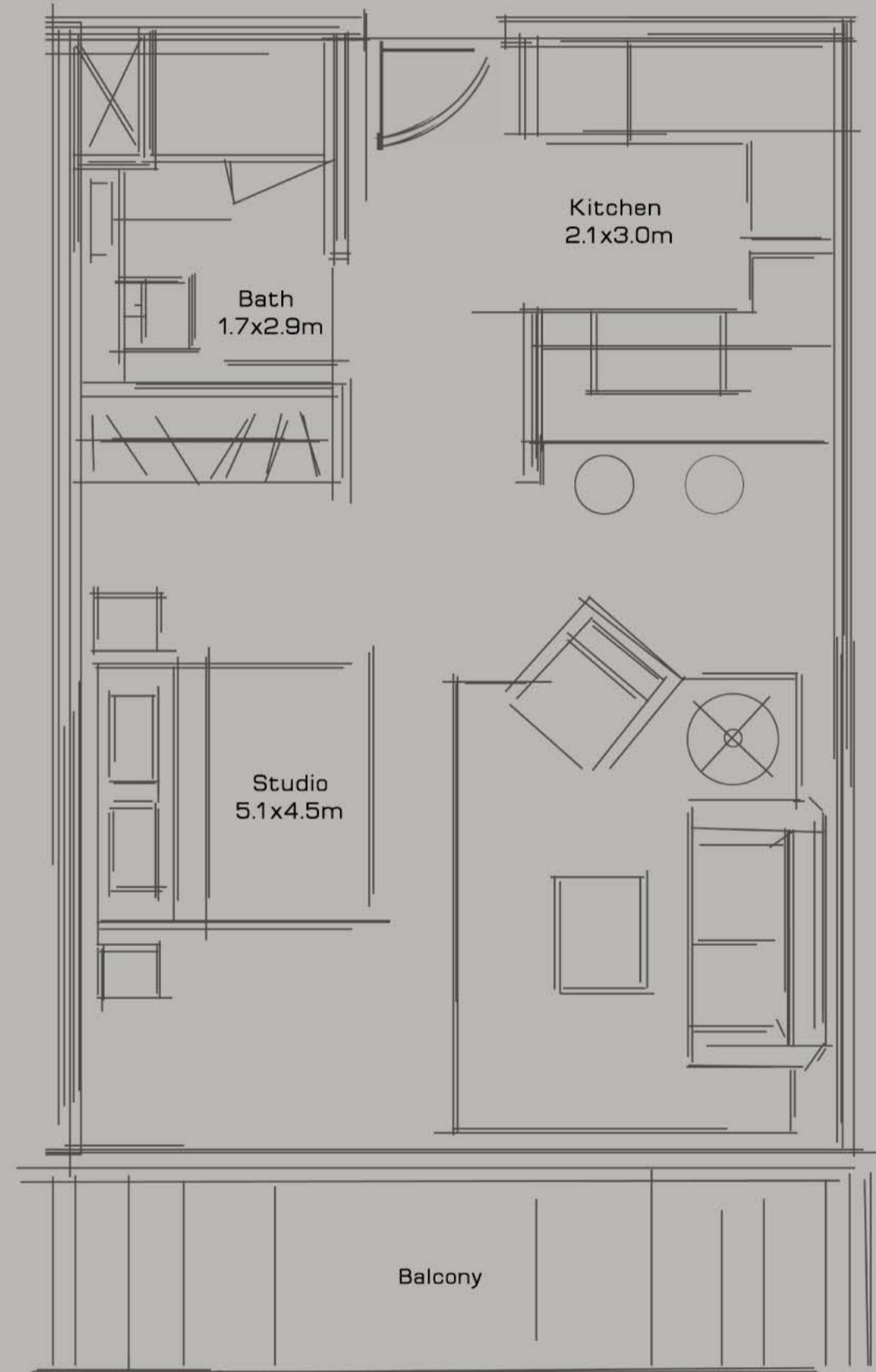
Floor Plans



SILVERENE

SILVERENE

Studio

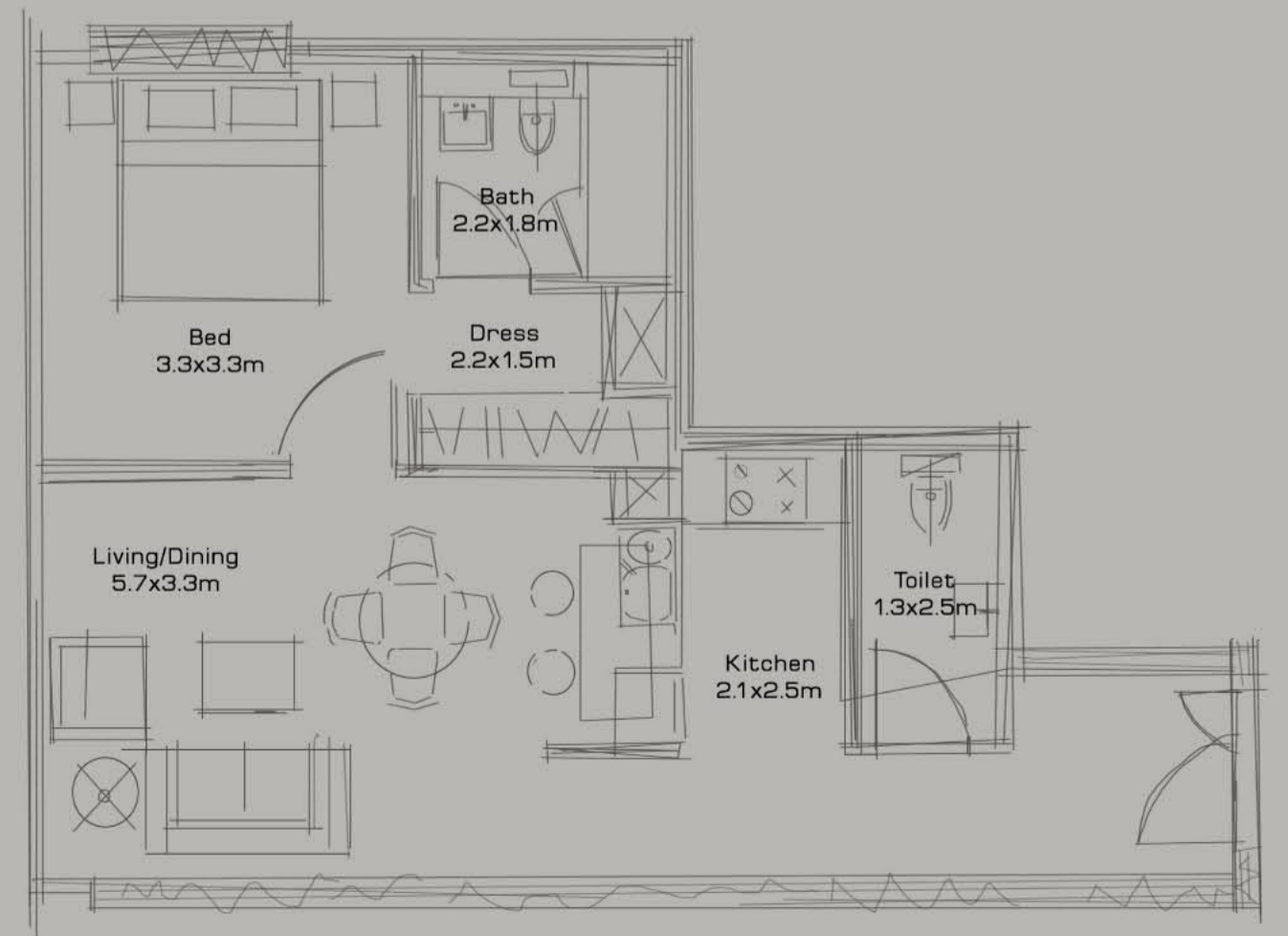
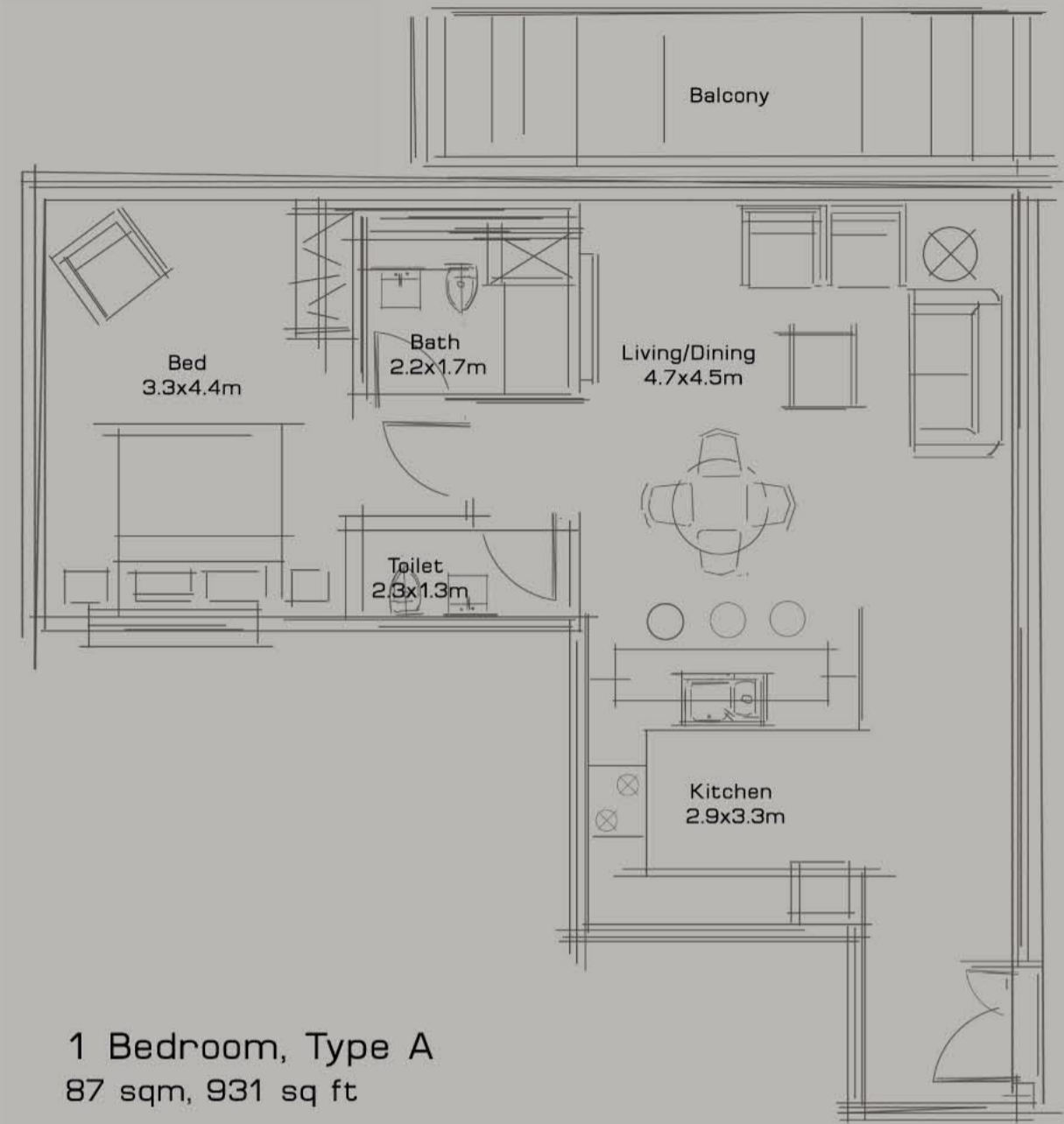


SILVERENE

SILVERENE

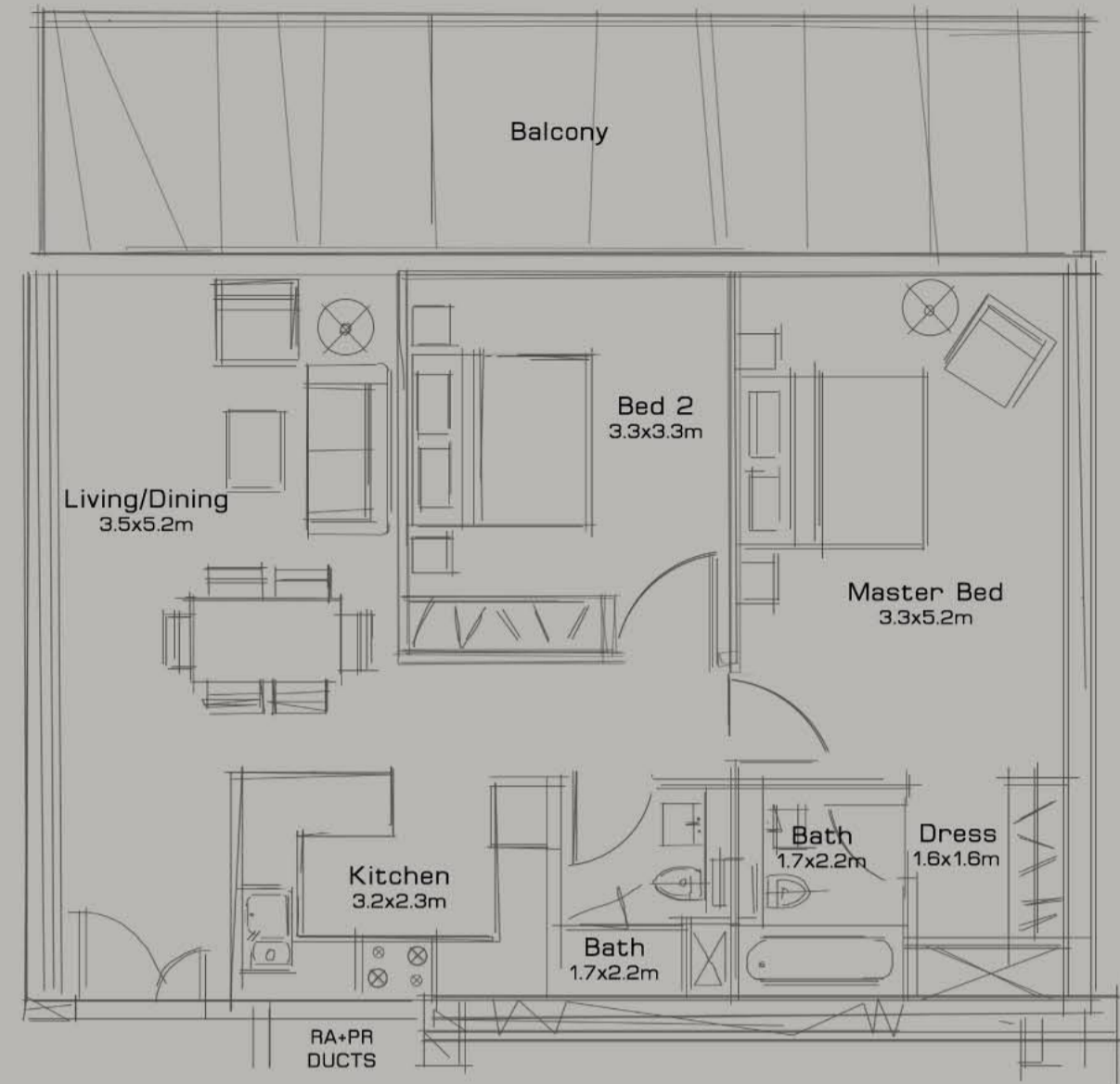
Studio
56 sqm, 607 sq ft

1 Bedroom

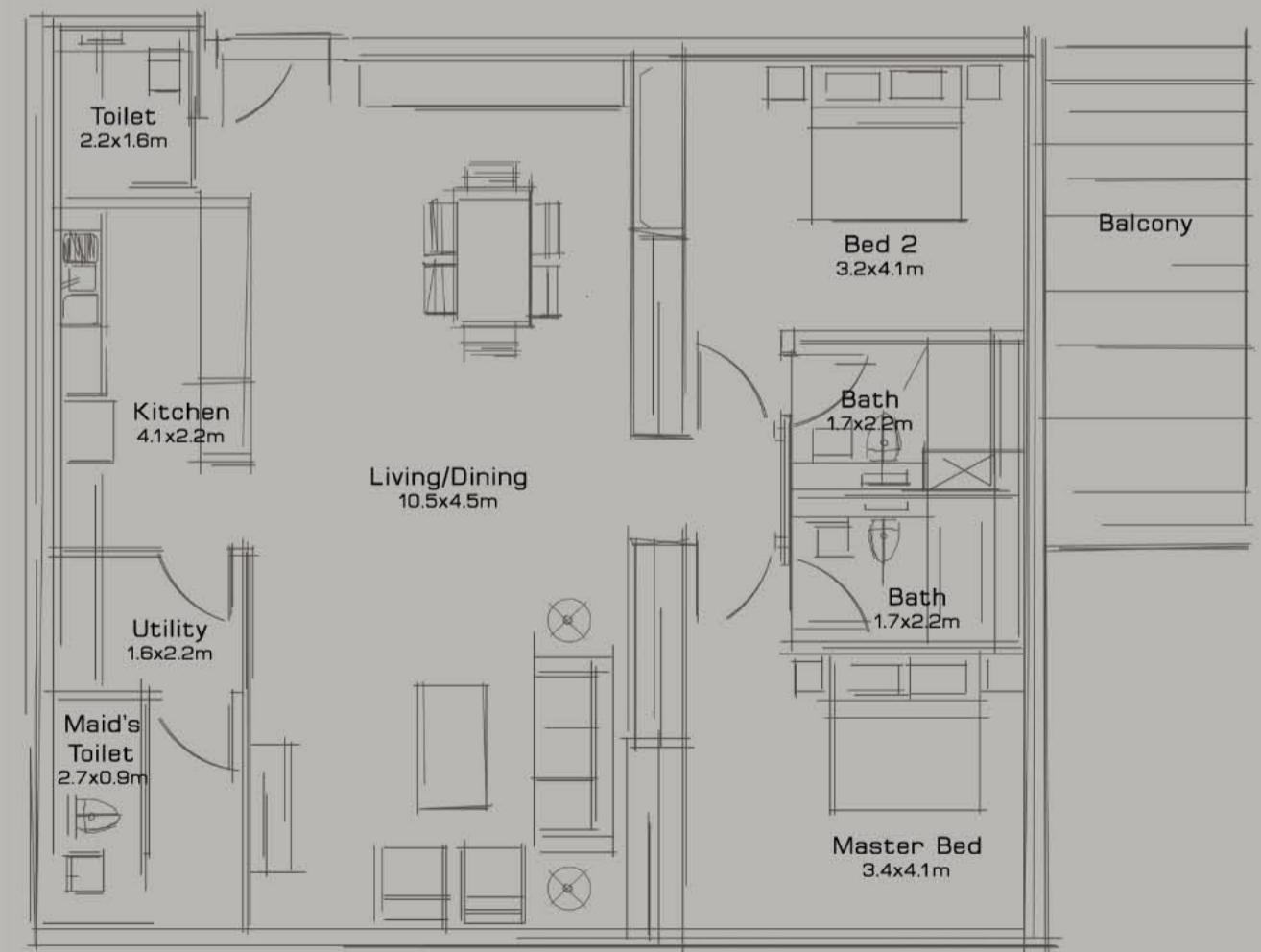


SILVERENE

SILVERENE



2 Bedroom, Type A
113 sqm, 1,214 sq ft

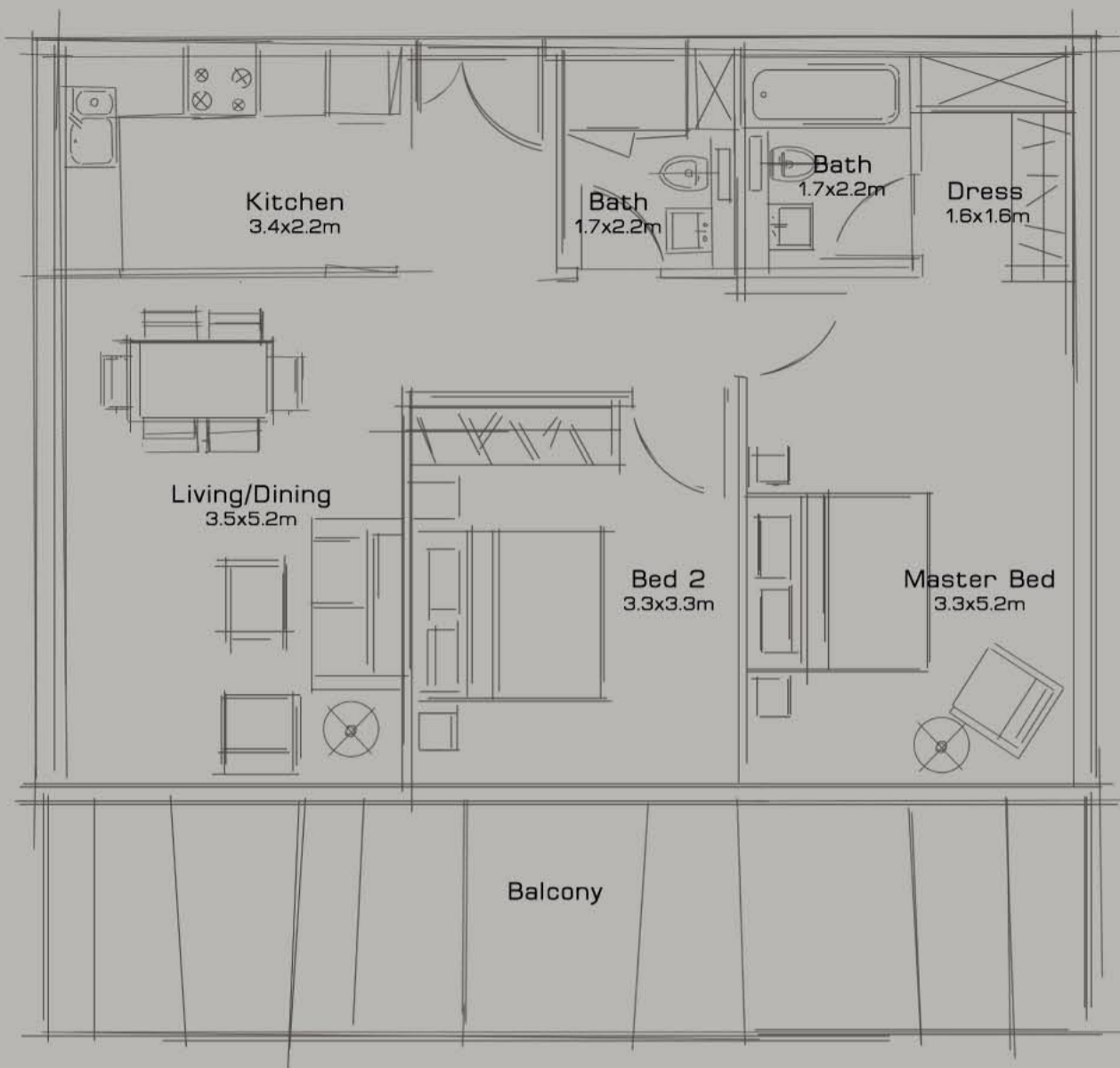


2 Bedroom, Type B
146 sqm, 1,568 sq ft

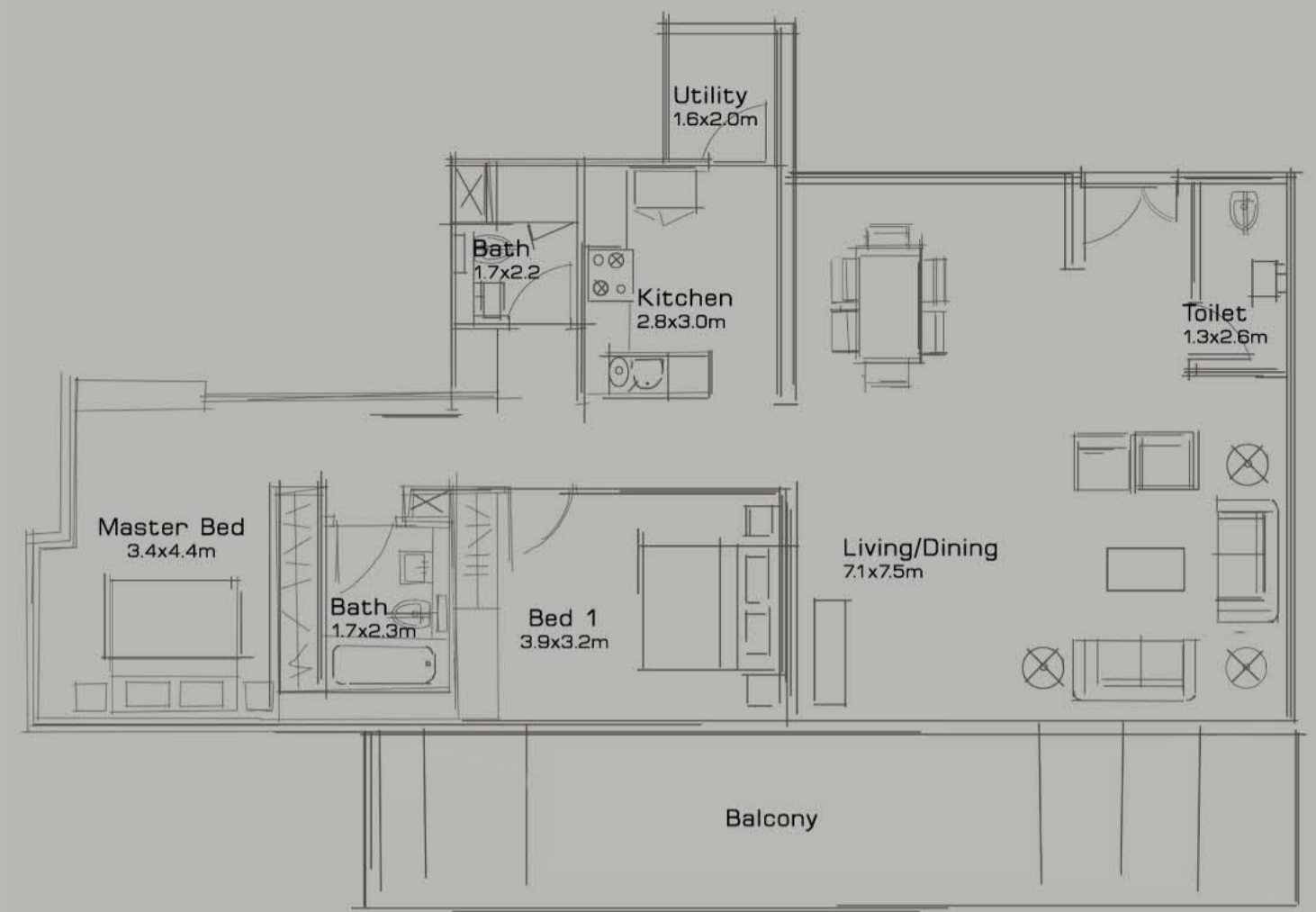
2 Bedroom

SILVERENE

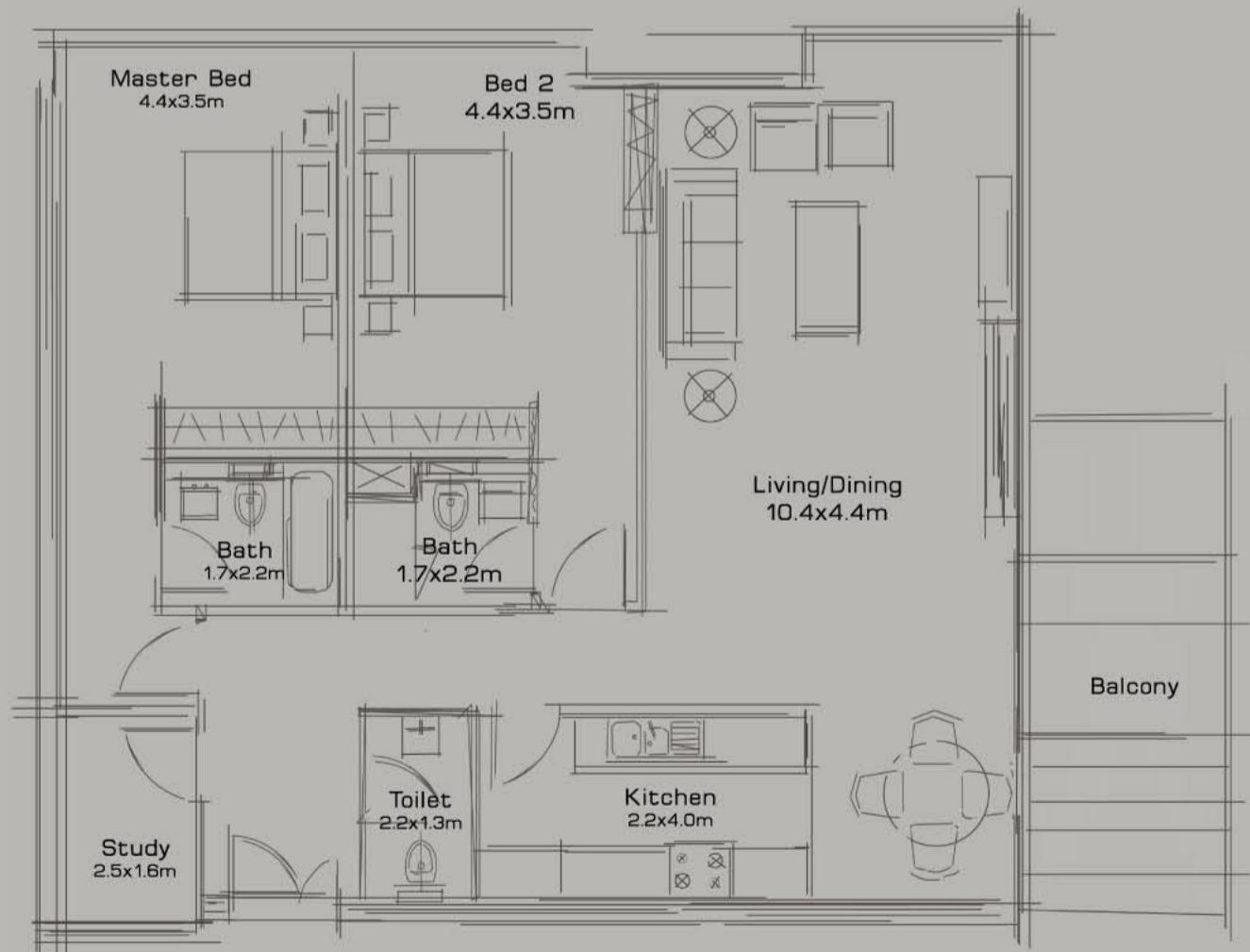
SILVERENE



2 Bedroom, Type C
113 sqm, 1,214 sq ft



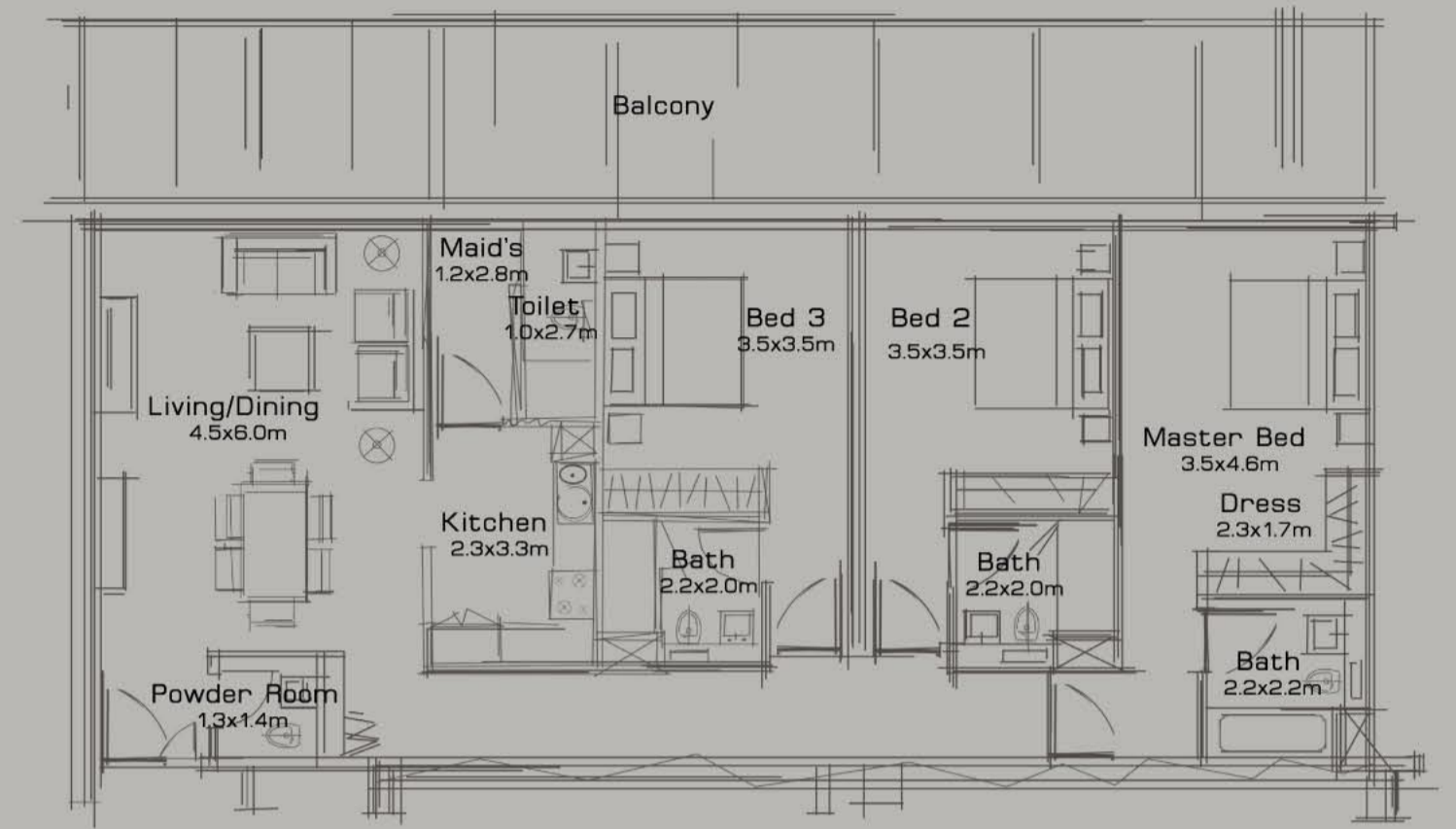
2 Bedroom, Type E
162 sqm, 1,739 sq ft



2 Bedroom, Type D
146qm, 1,568 sq ft

SILVERENE

SILVERENE



3 Bedroom, Type B
188 sqm, 2,023 sq ft



3 Bedroom, Type C
184 sqm, 1,979 sq ft

3 Bedroom

SILVERENE

SILVERENE

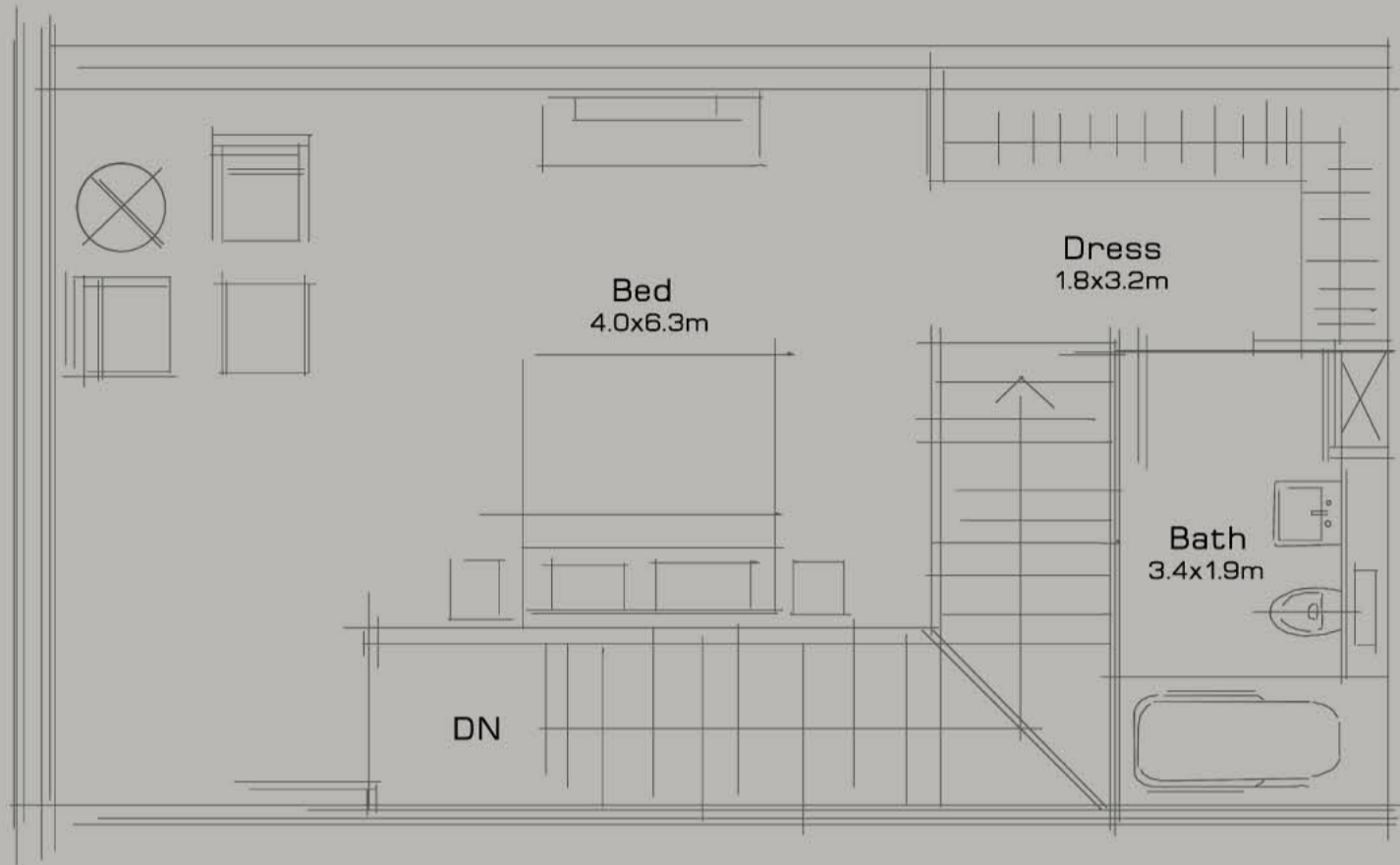


3 Bedroom, Type D
183 sqm, 1,972 sq ft

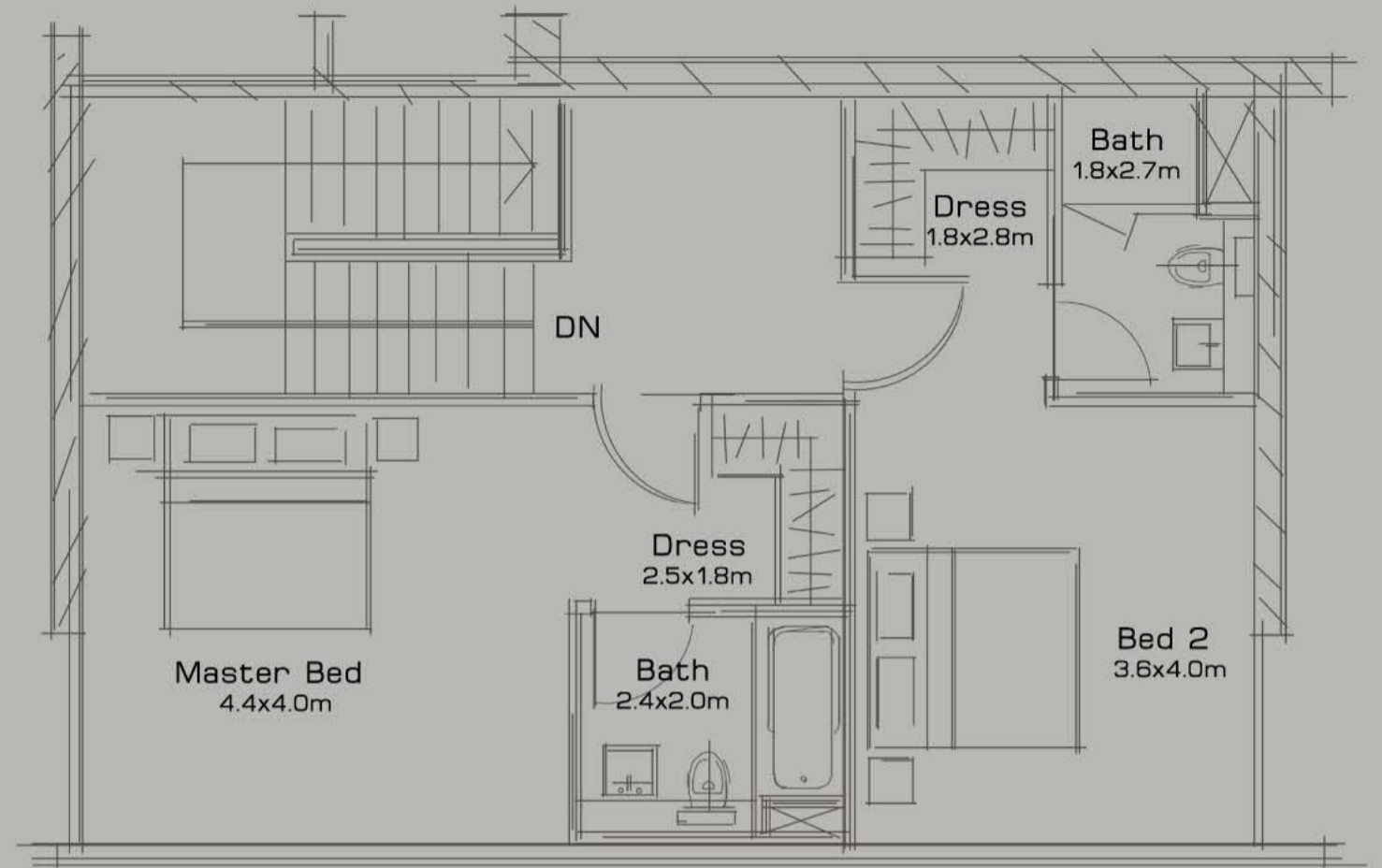
Duplex

SILVERENE

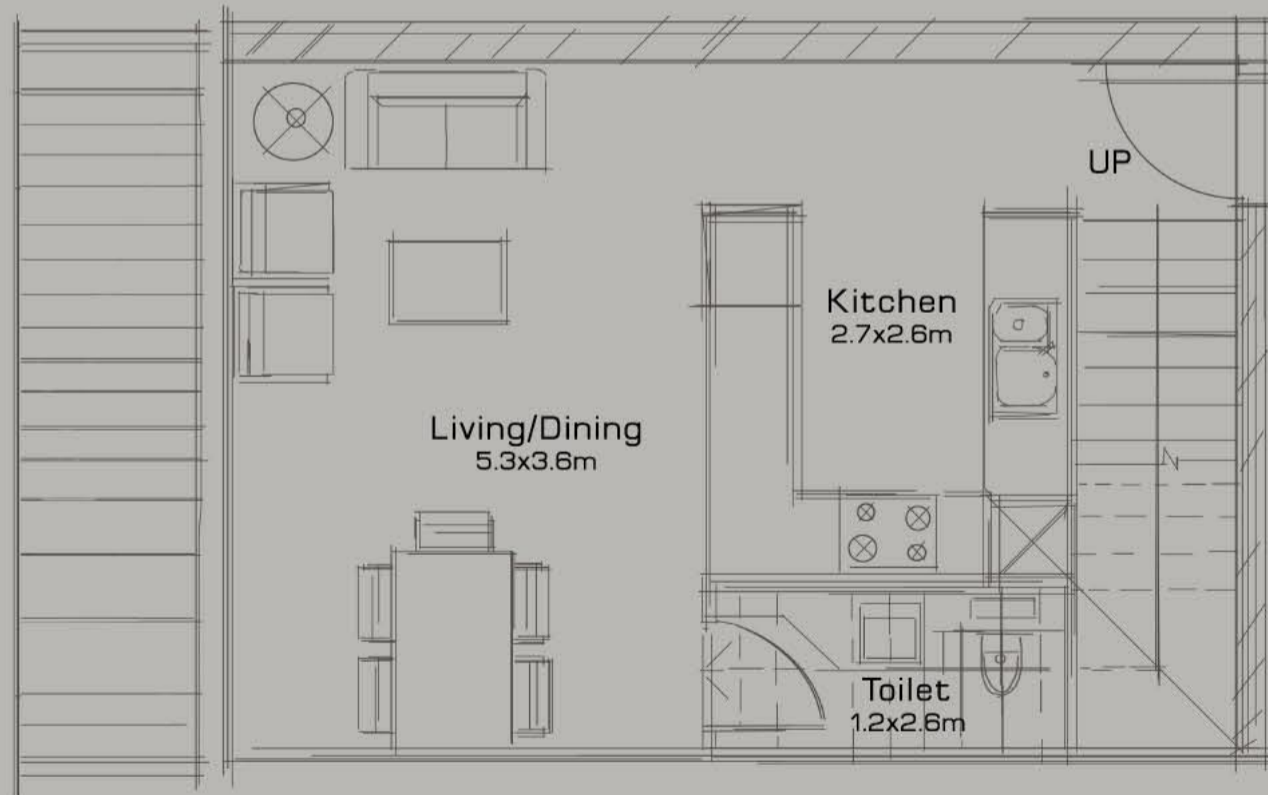
SILVERENE



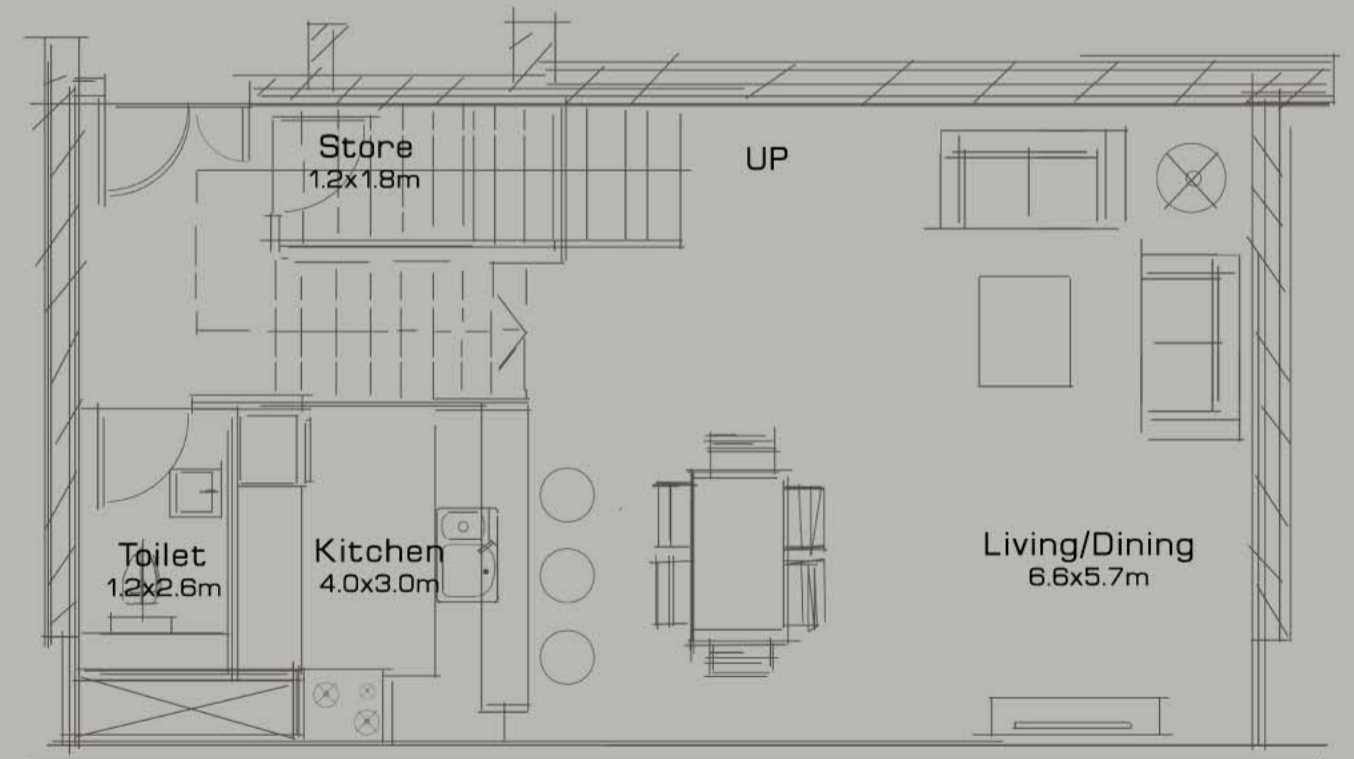
Top level



Top level



Lower level



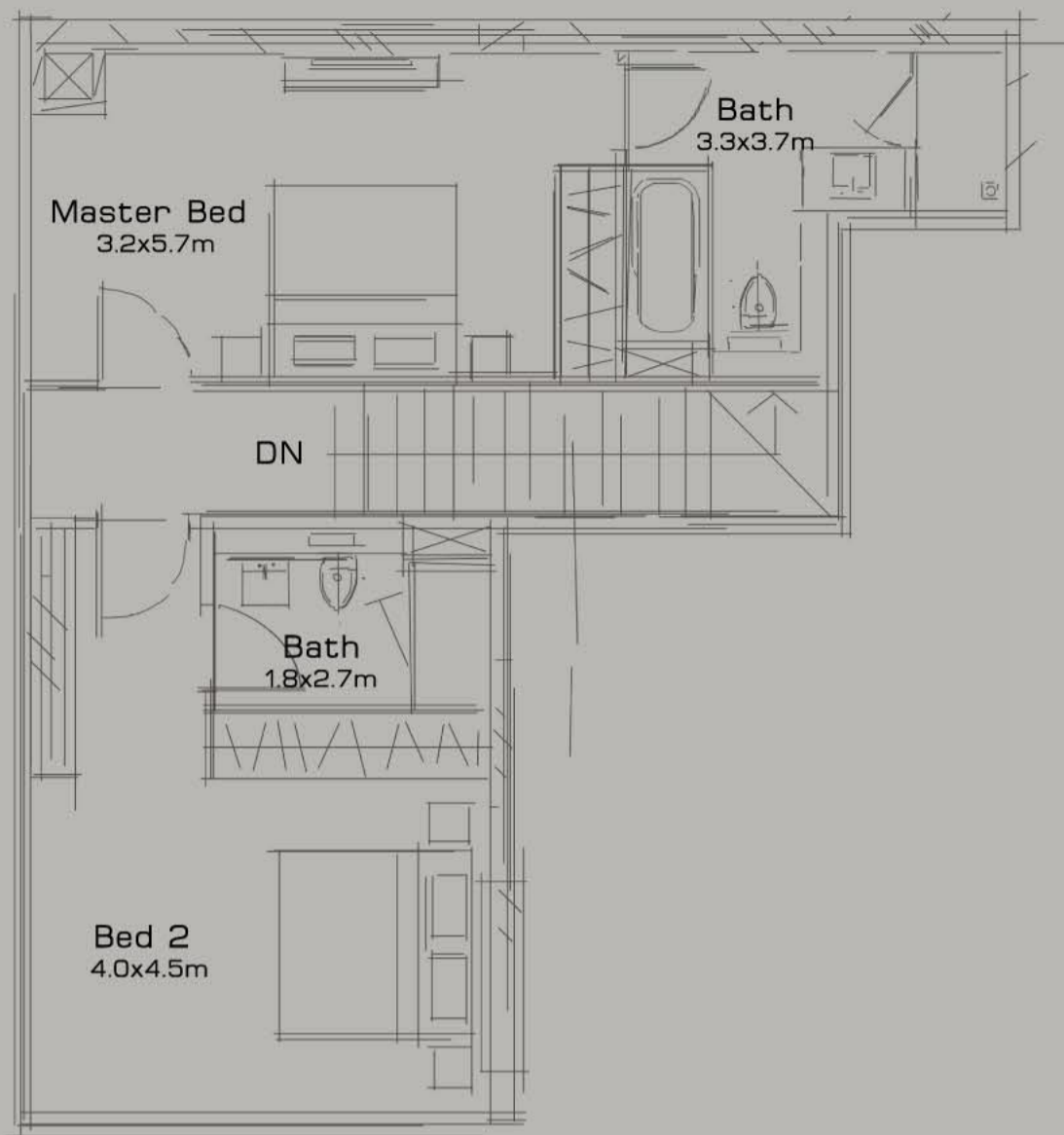
Lower level

1 Bedroom duplex, Type A
110 sm, 1,183 sq ft

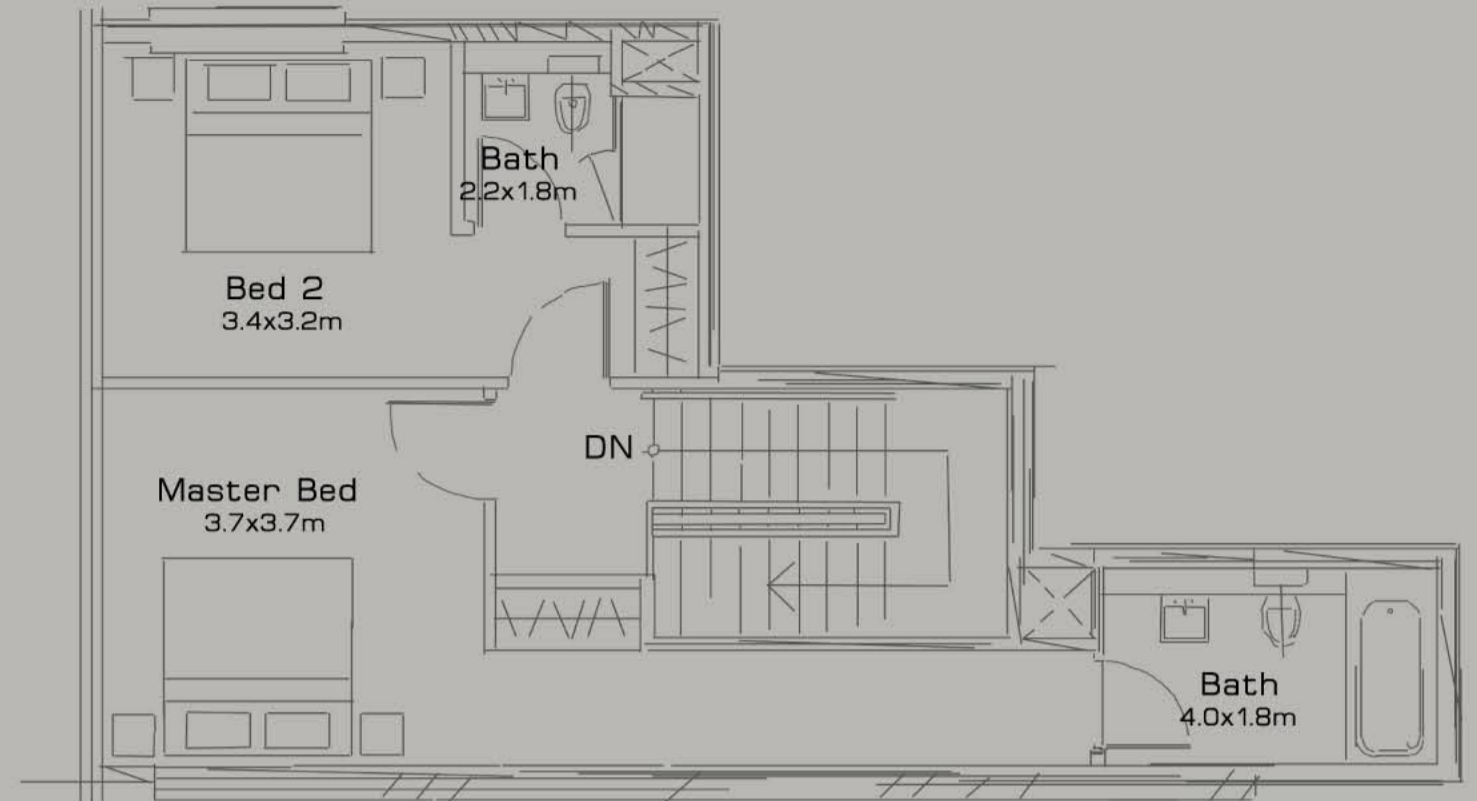
SILVERENE

2 Bedroom duplex, Type A
143 sm, 1,538 sq ft

SILVERENE



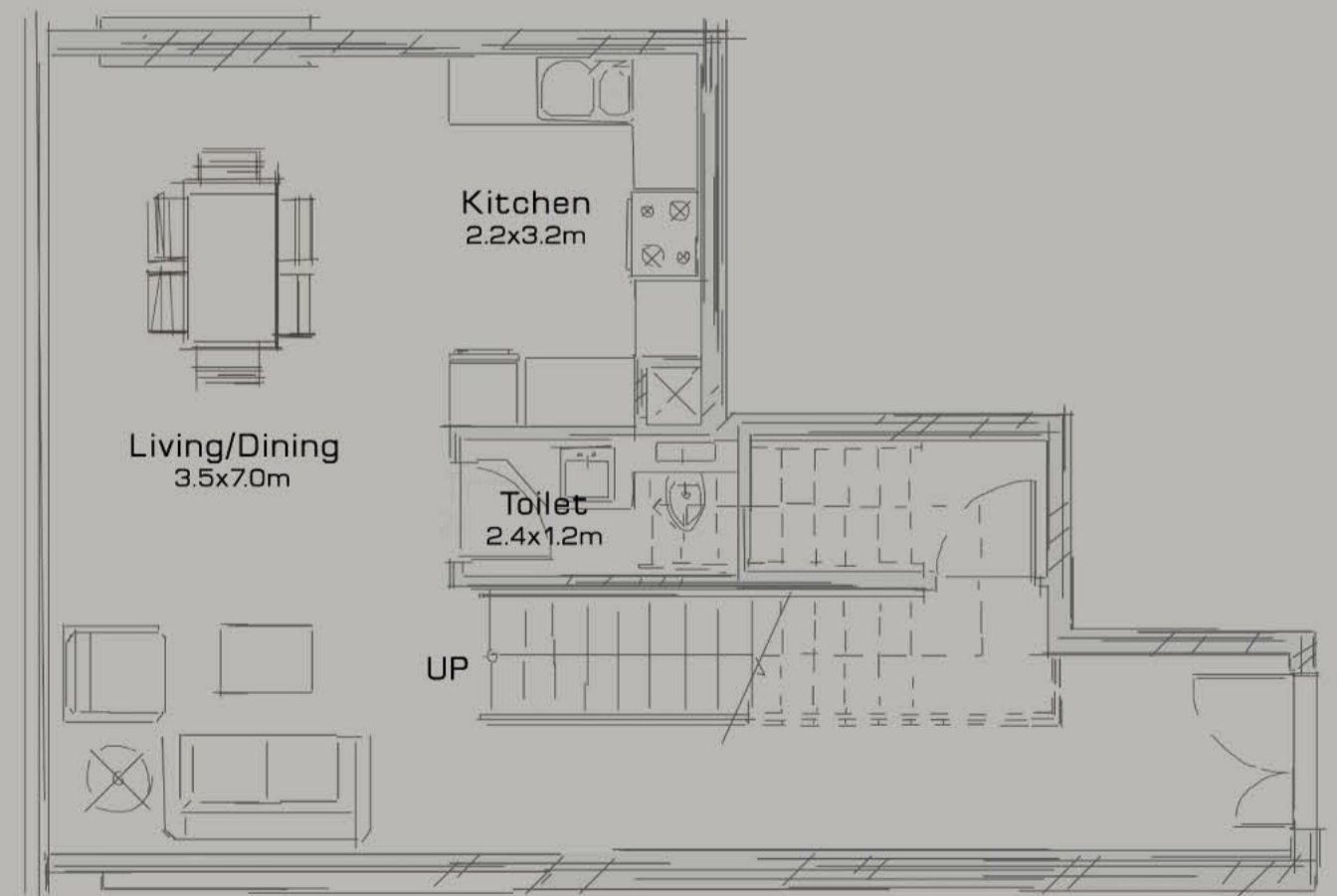
Top level



Top level



Lower level



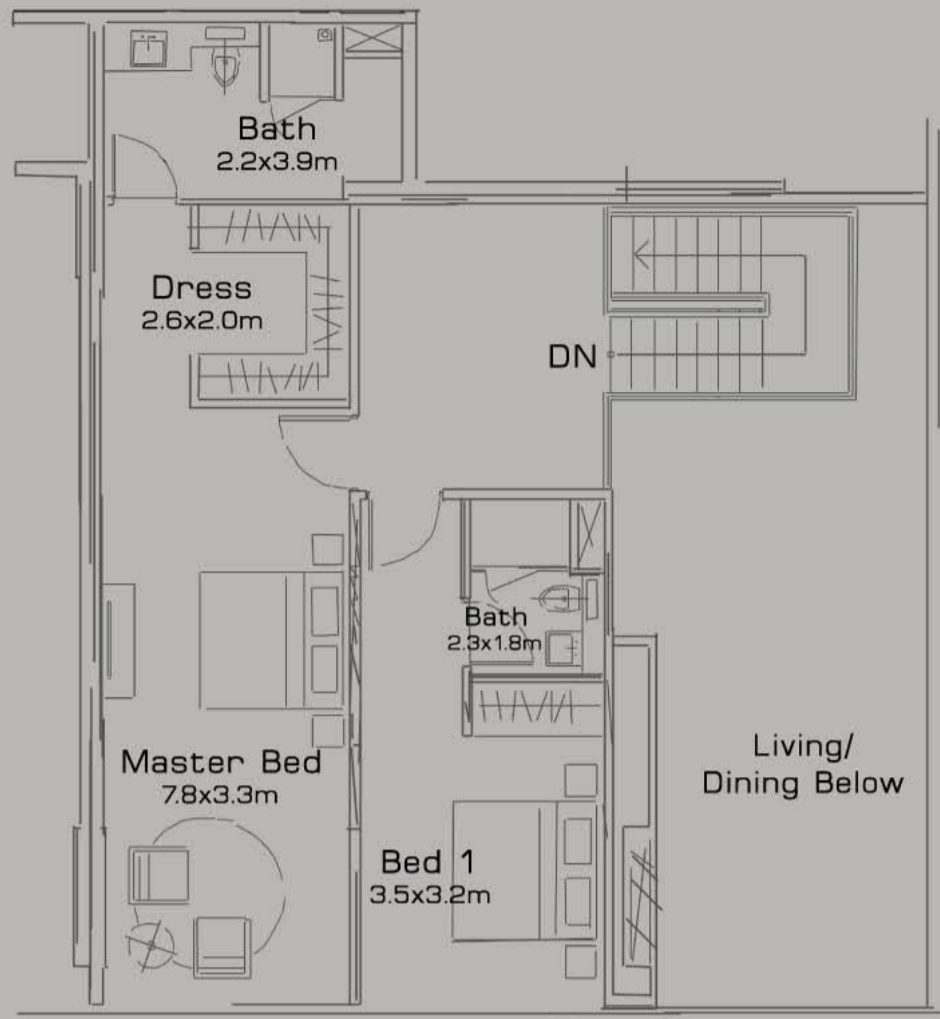
Lower level

2 Bedroom duplex, Type B
157 sm, 1,694 sq ft

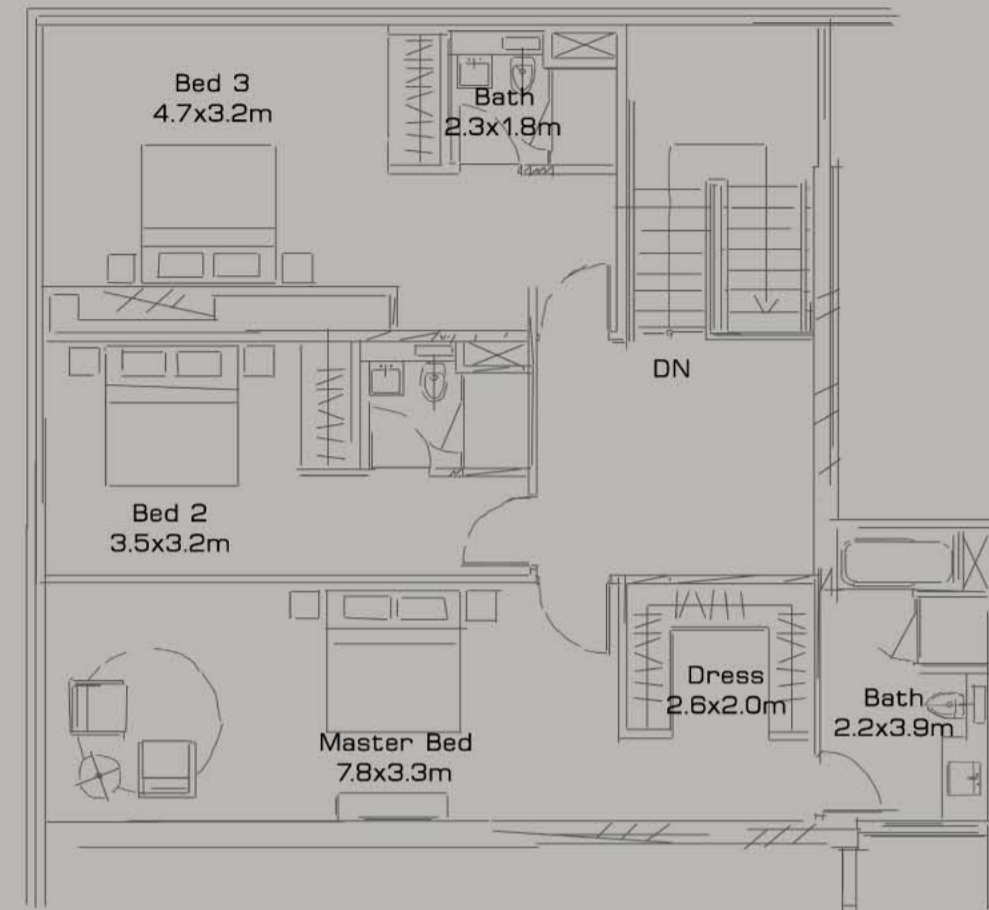
SILVERENE

2 Bedroom duplex, Type C
123 sm, 1,325 sq ft

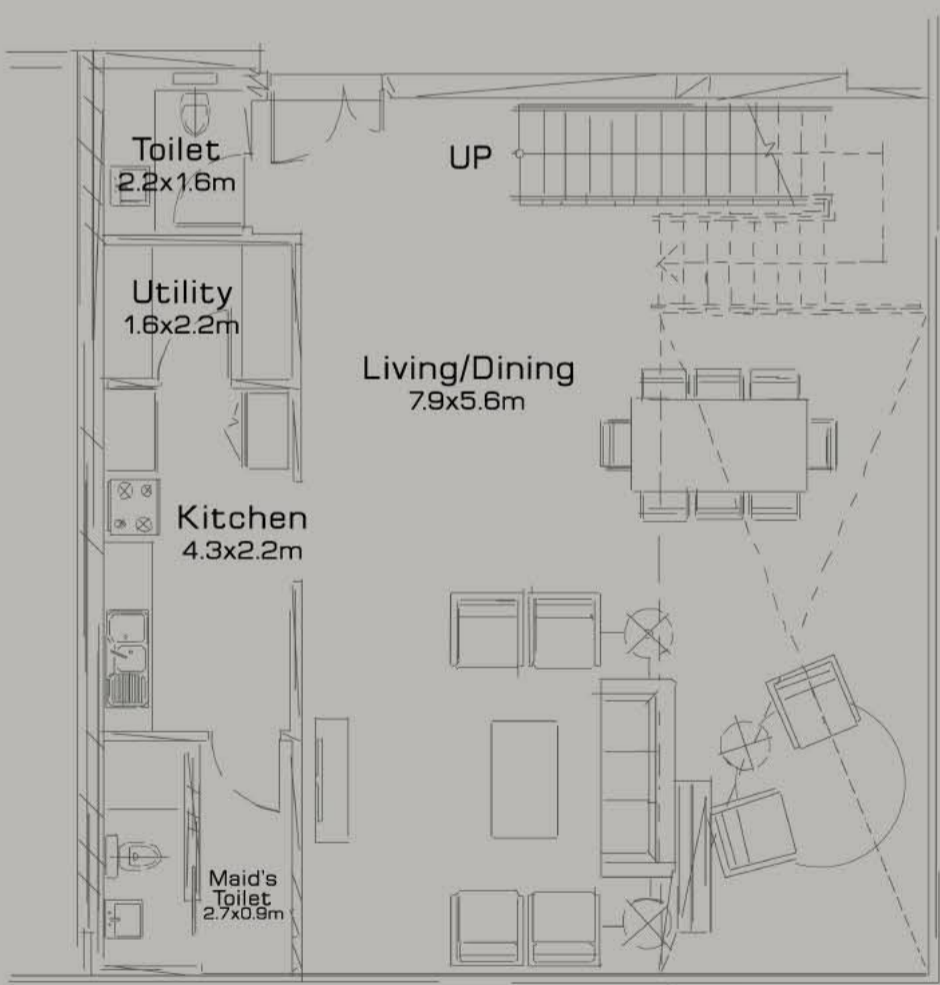
SILVERENE



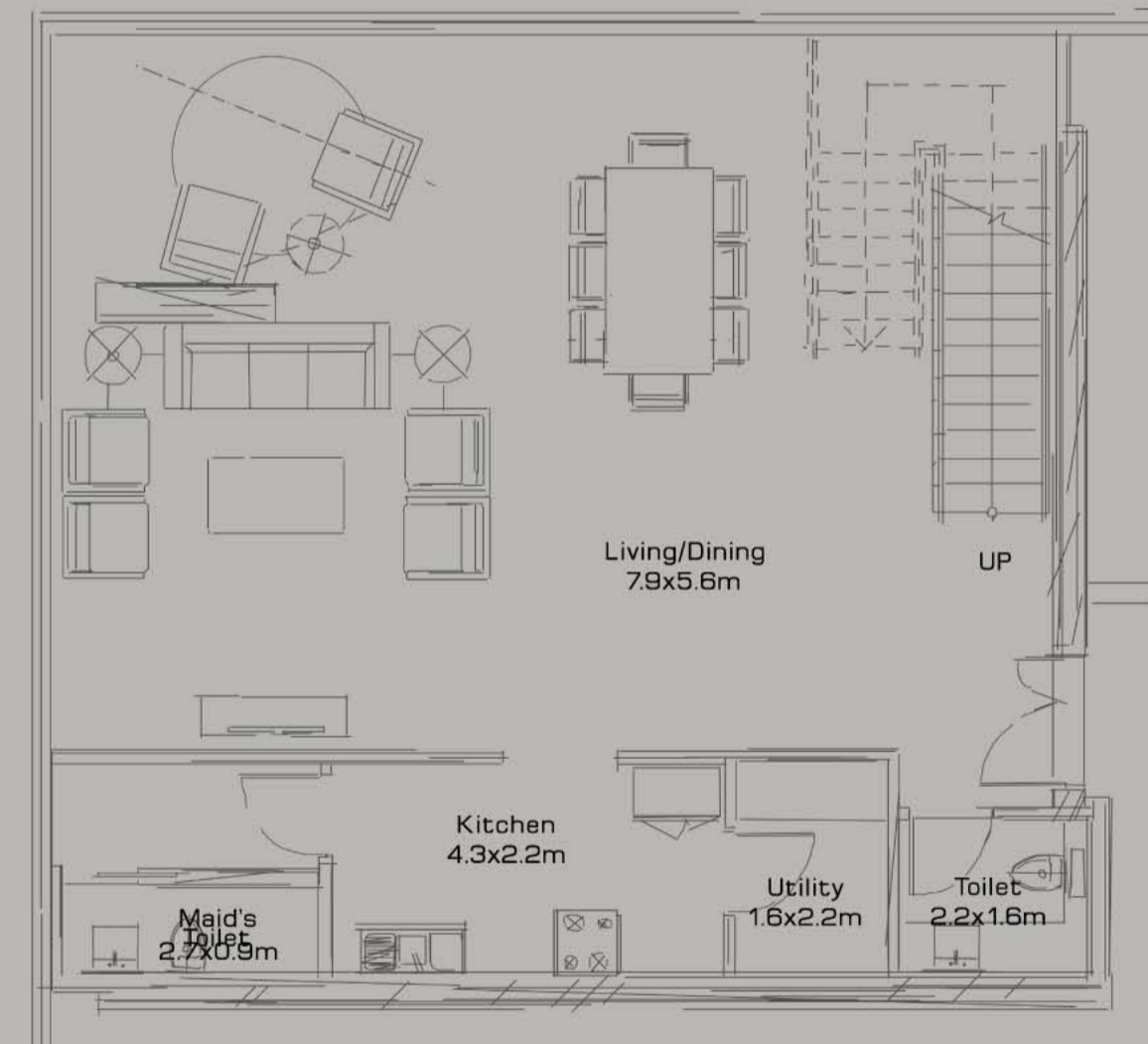
Top level



Top level



Lower level



Lower level

2 Bedroom duplex, Type D
217 sm, 2,330 sq ft

3 Bedroom duplex, Type A
242 sm, 2,602 sq ft

SILVERENE

SILVERENE



Tel: +9714 361 9333 Fax: +9714 361 5433; email: info@cayan.net; www.cayan.net
Emaar Business Park 1, Opposite Internet City, 3rd Floor, Suite 300