

Cayan Quarterly Update

QUARTER 4

DECEMBER 2009

It has been a tough year for everyone but Cayan is persevering; additional manpower, double shifts, and lots of dedication have helped us reach where we are today on our construction sites. With 2009 coming to an end, we would like to share with you the progress during the last quarter of 2009 for Cayan's projects.

Infinity

Location: Dubai Marina

Contractor: Arabtec

Consultant: Skidmore Owings & Merrill / Khatib& Alami

Lets Do The Twist is our theme this quarter at Infinity; so far we have achieved a 25 degree twist and we have 1850 construction workers on site learning 'to do the twist'!

Infinity core wall is now on level 38 and the typical floor plate is on level 33; up from our last report in September 2009 from level 23 for the core wall and level 15 for the typical floor.

Glass cladding and the façade is ongoing and has reached level 18, whilst plaster works and block work have reached level 15.

A 1-bedroom mock up apartment is available for viewing at Infinity, it is fully fitted with all the apartment finishes including flooring, bathrooms, kitchen appliances and fittings. For viewing you can book an appointment by calling the Cayan head office on 04 361 9333.



December 2009



August 2009

Picture taken 9 December 2009

Silverene

Location: Dubai Marina

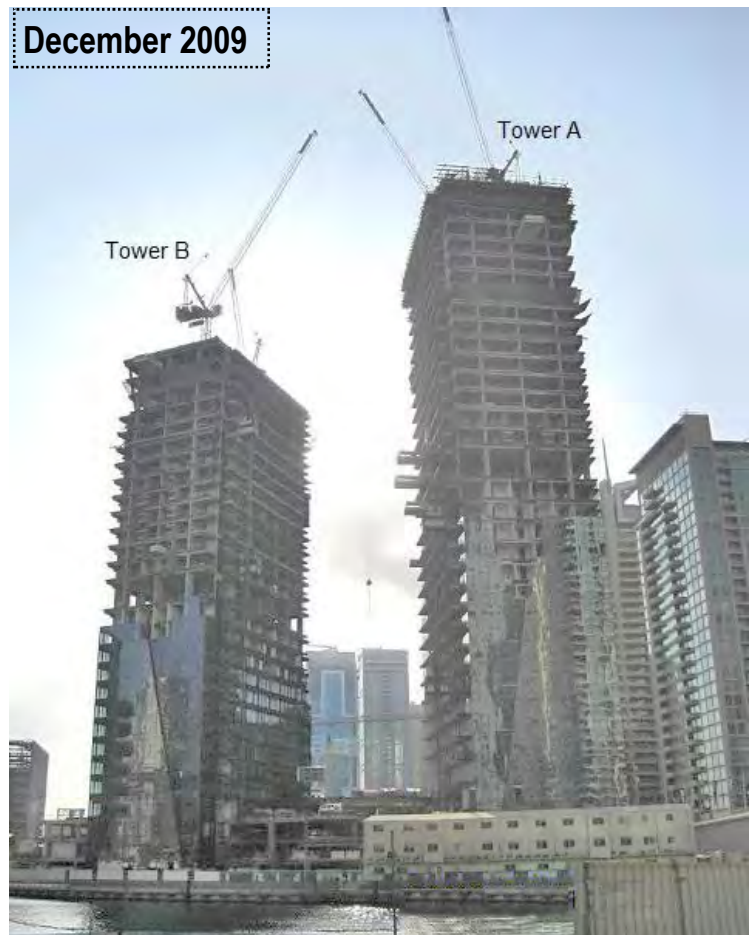
Contractor: Arabtec

Consultant: Robert Mathew Johnson Marshall (RMJM)

Total number workers on site: 2900 !

Silverene continues to grow tall on the marina front; Tower B typical floor is now 100% complete, current work is in progress on the roof slab and top feature. For Tower A, the core wall has reached level 34 with the typical floor on level 33, so there is only one floor left to complete the structure. In our last construction update both towers were on level 19 as typical floors; a phenomenal achievement of building 14 floors in the span of 12 weeks. Block work has reached level 19 while painting and aluminum cladding is on level 12.

A 2 bedroom mock up apartment is available for viewing on the 3rd floor in Tower A, this apartment offers stunning, panoramic marina views from all rooms and looks down towards the West side of the marina. For an appointment to view the apartment, call Cayan head office on 04 361 9333.



Plaza Residences

Location: Jumeirah Village

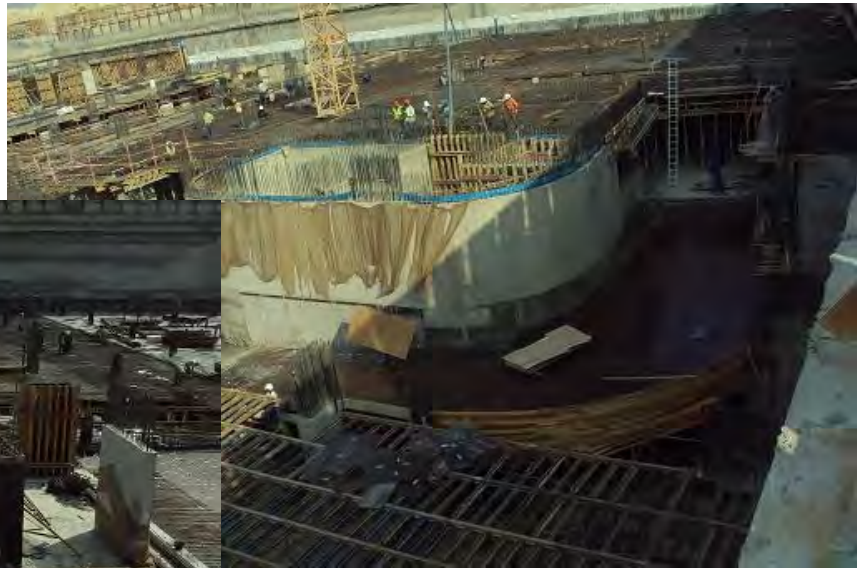
Contractor: National Engineering Bureau (NEB)

Consultant: Construction and Reconstruction Company (CRC)

This large plot of land is now taking shape with the column works for basement 3 and 2 complete; the basement floor slabs for basement 3 are complete and basement 2 is at 85% completion. Work is in progress for basement 1 followed by the ground floor.

The area around Plaza Residences is improving with a major development next door ready and in the process of being handed over to its owners.

December 2009



August 2009

